

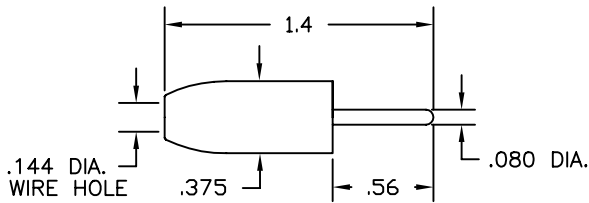
TEST LEAD INTERFACE COMPONENTS

BASIC INFORMATION

Colors: Black, Brown, Red, Orange, Yellow, Green, Blue, Violet, Gray and White, unless otherwise specified in individual boxes.

These components are the same as used on all Test Lead Assemblies, pages 6-11, 21, 22 and 31-103.

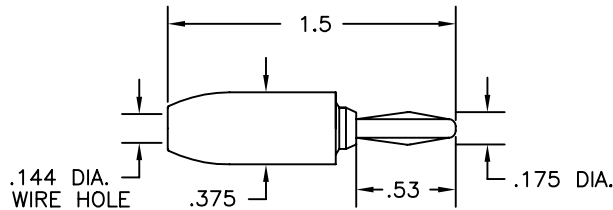
STANDARD .080" (2.03mm) PIN



Part No.	Description
9201	Standard .080" (2.03mm) Pin
9201-S	Assortment of 1 each of 10 Colors

Nylon Handle, Nickel-Plated Brass Body. Solderless Assembly.
Colors: 10, Specify. See listing in Basic Information.

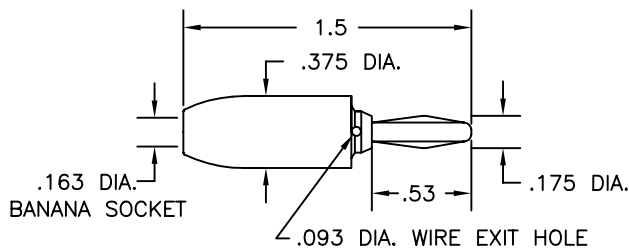
STANDARD BANANA PLUG



Part No.	Description
9202	Standard Banana Plug
9202-S	Assortment of 1 each of 10 Colors

Nylon Handle, Nickel-Plated Brass Body. Nickel Silver Springs.
Solderless Assembly.
Colors: 10, Specify. See listing in Basic Information.

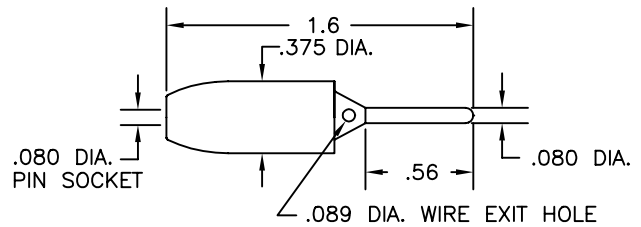
STACKING BANANA PLUG



Part No.	Description
9203	Stacking Banana Plug
9203-S	Assortment of 1 each of 10 Colors

Nylon Handle, Nickel-Plated Brass Body. Nickel Silver Springs.
Solderless Assembly.
Colors: 10, Specify. See listing in Basic Information.

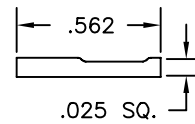
STACKING .080" (2.03mm) PIN



Part No.	Description
9204	Stacking .080" (2.03mm) Pin
9204-S	Assortment of 1 each of 10 Colors

Nylon Handle. Nickel-Plated Brass Body. Solderless Assembly.
Colors: 10, Specify. See listing in Basic Information.

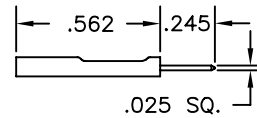
.025" (.635mm) SQUARE SOCKET



Part No.	Description
9205	.025" Square Socket
9205-HS	Square Socket with .75" (19mm) Heat Shrink Sleeve

Brass Body. Gold-Plated Beryllium Copper Spring. Crimp Assembly.

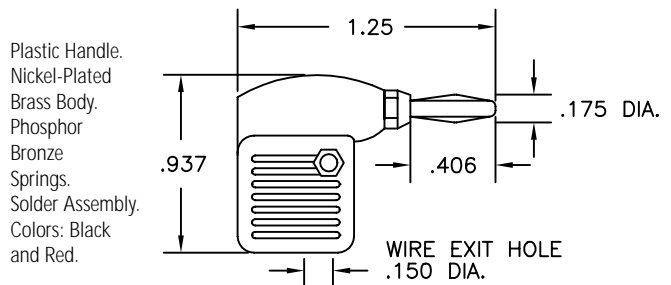
.025" (.635mm) SQUARE PIN



Part No.	Description
9265	.025" (.635mm) Square Pin
9265-HS	Square Pin with .75" (19mm) Heat Shrink Sleeve

Gold-Plated Brass Body. Crimp Assembly.

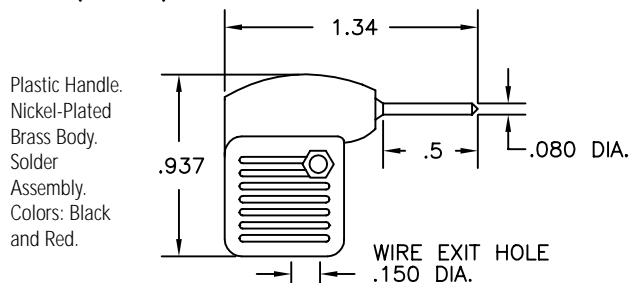
METER BANANA PLUG



Plastic Handle.
Nickel-Plated Brass Body.
Phosphor Bronze Springs.
Solder Assembly.
Colors: Black and Red.

Part No.	Description
9206	Meter Banana Plug

.080" (2.03mm) METER PIN

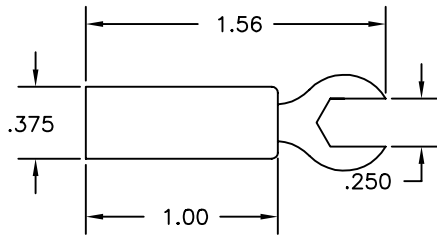


Plastic Handle.
Nickel-Plated Brass Body.
Solder Assembly.
Colors: Black and Red.

Part No.	Description
9207	Meter Pin Plug

TEST LEAD INTERFACE COMPONENTS

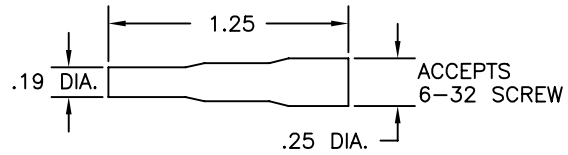
.250" (6.35mm) INSULATED SPADE LUG



Part No.	Description
9208	.250" Spade Lug

Plastic Handle. .050" (1.27mm) Thick Nickel Plated Brass Lug.
Solder Assembly. Colors: Red, Black. Specify.

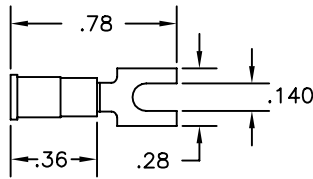
FEMALE 6-32 THREAD



Part No.	Description
9212	Female 6-32 Thread

Silicone Rubber Insulator. Cadmium-Plated Steel Spring Thread.
Solder Assembly. Colors: Red, Black. Specify.

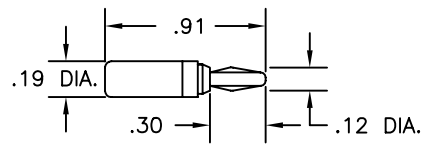
.140" (3.57mm) INSULATED SPADE LUG



Part No.	Description
9209	.140 Spade Lug for AWG22 to 18 Lead Insulation Maximum: .150" (3.81mm) For No. 6 Screw—.140" (3.55mm)

Vinyl Insulator. Tin Plated Copper Lug. Crimp on Assembly.
Color: Red Only.

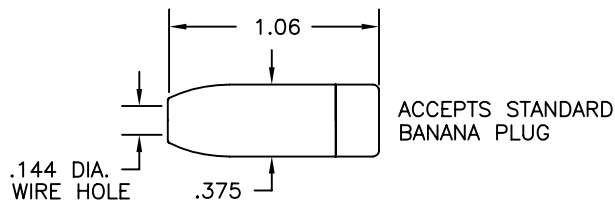
MINIATURE BANANA PLUG



Part No.	Description
9213	Miniature Banana Plug
9213-S	Assortment of 1 each of 10 Colors

Plastic Handle. Nickel-Plated Brass Body. Nickel-Plated Beryllium Copper Springs.
Solder Assembly. Colors: 10, Specify. See listing in Basic Information.

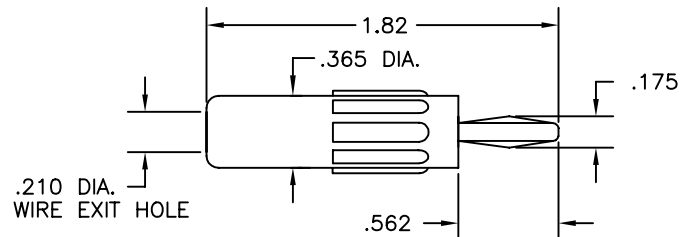
STANDARD BANANA JACK



Part No.	Description
9210	Standard Banana Jack
9210-S	Assortment of 1 each of 10 Colors

Nylon Handle. Nickel-Plated Brass Socket. Solder Assembly.
Colors: 10, Specify. See listing in Basic Information.

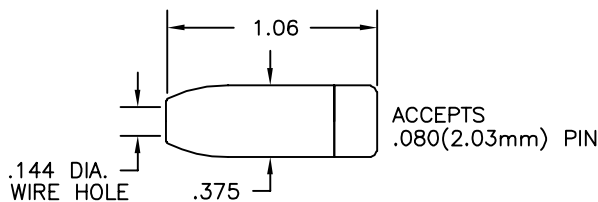
BANANA PLUG FOR HEAVY WIRE



Part No.	Description
9214	Banana Plug for Heavy Wire

Plastic Handle. Nickel-Plated Brass Body. Nickel Silver Springs.
Solderless Assembly. Colors: Red, Black. Specify.

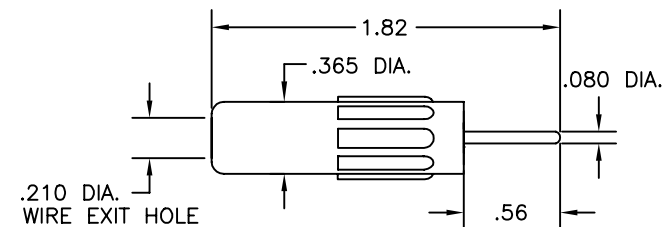
STANDARD .080" (2.03mm) TIP JACK



Part No.	Description
9211	Standard .080" (2.03mm) Tip Jack
9211-S	Assortment of 1 each of 10 Colors

Nylon Handle. Silver-Plated Beryllium Copper Contact Spring.
Solder Assembly. Colors: 10, Specify. See listing in Basic Information.

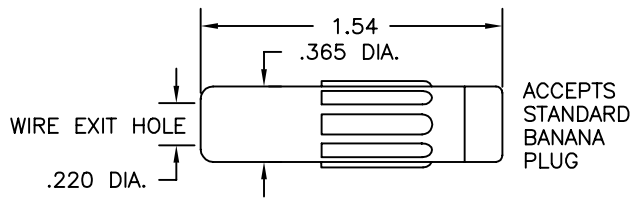
.080" (2.03mm) PIN FOR HEAVY WIRE



Part No.	Description
9250	.080" (2.03mm) Pin for Heavy Wire

Plastic Handle. Nickel-Plated Brass Body. Solderless
Assembly. Colors: Black, Red. Specify.

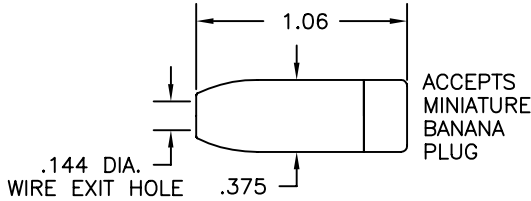
STANDARD BANANA JACK WITH LONG BODY AND LARGE WIRE EXIT HOLE TO ACCOMODATE HEAVY WIRE



Part No.	Description
9251	Standard Banana Jack with Long Body

Plastic Handle. Nickel-Plated Brass Socket. Solder Assembly. Colors: Black, Red & White. Specify.

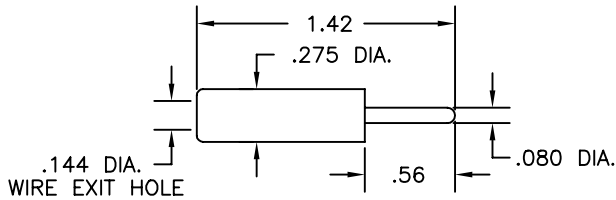
MINIATURE BANANA JACK



Part No.	Description
9252	Miniature Banana Jack
9252-S	Assortment of 1 each of 10 Colors

Nylon Handle. Nickel-Plated Brass Socket. Solder Assembly. Colors: 10, Specify. See listing in Basic Information.

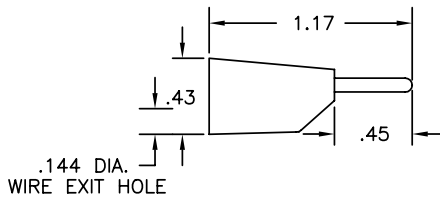
SLIMLINE .080" (2.03mm) PIN WITH .275" (7mm) DIAMETER BODY



Part No.	Description
9258	Slimline (.275"/7mm O.D.) .080" (2.03mm) Pin

Delrin Handle. Nickel-Plated Brass Body. Solderless Assembly. Colors: Black, Red & White. Specify.

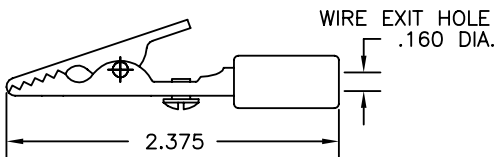
.080" (2.03mm) STACKING PIN FOR HEAVY WIRE



Part No.	Description
9259	Slimline (.31"/7.8mm O.D.) Stacking .080" Pin
9259-S	Assortment of 1 each of 10 Colors

Plastic Handle. Nickel-Plated Brass Body. Beryllium Copper Internal Jack Spring. Snap Together Solderless Assembly. Colors: 10, Specify. See listing in Basic Information.

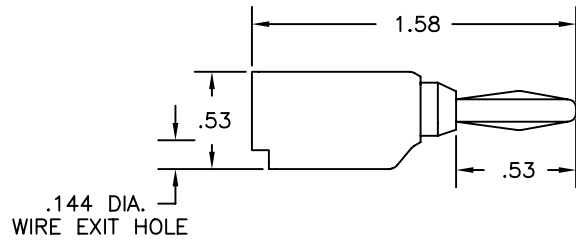
STANDARD ALLIGATOR SOLDERLESS ASSEMBLY WITH INSULATION SLEEVE



Part No.	Description
9288	Standard Alligator Solderless Assembly

Colors: Red, Black.

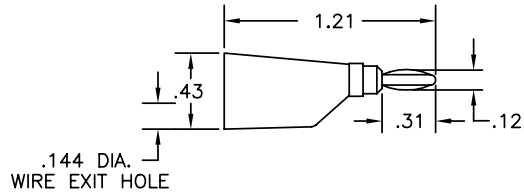
STACKING BANANA PLUG FOR HEAVY WIRE



Part No.	Description
9260	Stacking Banana Plug for Heavy Wire
9260-S	Assortment of 1 each of 10 Colors

Plastic Handle. Nickel-Plated Brass Body. Nickel-Silver One-Piece Spring. Snap Together Solderless Assembly. Colors: 10, Specify. See listing in Basic Information.

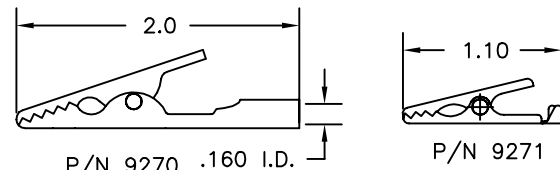
STACKING MINIATURE BANANA PLUG



Part No.	Description
9261	Stacking Miniature Banana Plug
9261-S	Assortment of 1 each of 10 Colors

Plastic Handle. Nickel-Plated Phosphor Bronze Body. Nickel-Plated Brass Socket. Solderless Assembly. Colors: 10, Specify. See listing in Basic Information.

STANDARD ALLIGATOR CLIP (UNINSULATED) or MINIATURE ALLIGATOR CLIP (UNINSULATED)

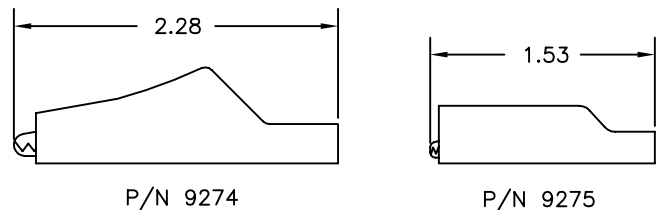


Part No.	Description
9270	Standard Alligator Clip
9271	Miniature Alligator Clip

Cadmium-Plated Steel Conductor. Solder Assembly.

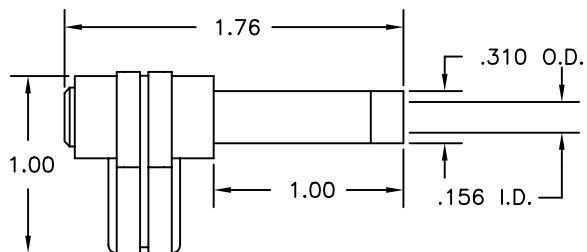
No. 9272 Flexible Vinyl Insulator for Standard Alligator Clip.
No. 9273 Flexible Vinyl Insulator for Miniature Alligator Clip.
Colors: 10, Specify. See listing in Basic Information.

INSULATED STANDARD ALLIGATOR CLIP or INSULATED MINIATURE ALLIGATOR CLIP



Part No.	Description
9274	Standard Alligator Clip with Vinyl Insulator
9274-S	Assortment of 1 each of 10 Colors
9275	Miniature Alligator Clip with Vinyl Insulator
9275-S	Assortment of 1 each of 10 Colors

SHROUDED RIGHT ANGLE STANDARD BANANA JACK

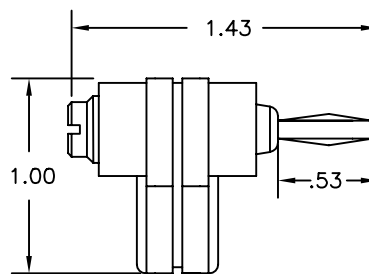


Part No.	Description
9309	Shrouded Right Angle Standard Banana Jack

Fits most **SIMPSON** Instruments with recessed plugs for shrouded receptacles.

Construction: Nickel-Plated Beryllium Copper Spring Socket. Plastic Handle. Solderless Assembly. Colors: Red, Black.

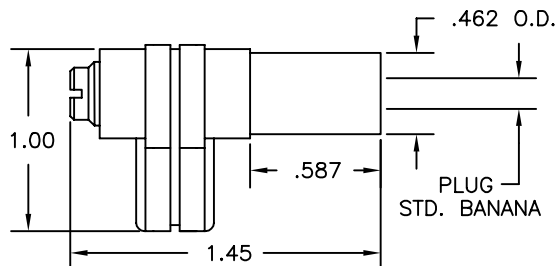
RIGHT ANGLE STANDARD BANANA PLUG



Part No.	Description
9304	Right Angle Standard Banana Plug

Construction: Nickel-Plated Brass Body. Nickel-Silver Springs. Plastic Handle. Solderless Assembly. Colors: Red, Black.

SHROUDED RIGHT ANGLE STANDARD BANANA PLUG

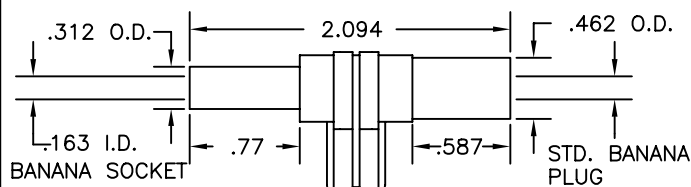


Part No.	Description
9301	Shrouded Right Angle Standard Banana Plug

Fits most **AMPROBE** and **BECKMAN** Instruments with recessed receptacles for shrouded plugs.

Construction: Nickel-Plated Brass Body. Nickel-Plated Phosphor Bronze Springs. Plastic Handle. Solderless Assembly. Colors: Red, Black.

STACKING SHROUDED RIGHT ANGLE STANDARD BANANA PLUG

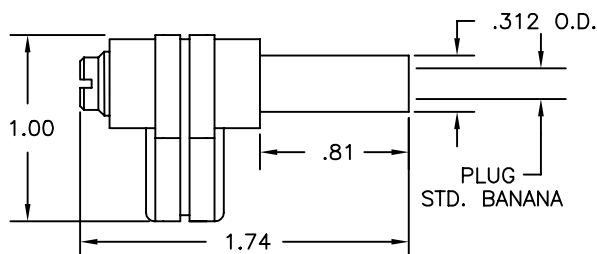


Part No.	Description
9305	Stacking Shrouded Right Angle Standard Banana Plug/Jack

Fits most **AMPROBE BECKMAN, SIMPSON** and **TRIPLETT** Instruments with recessed receptacles for shrouded plugs.

Construction: Male: Nickel-Plated Brass Body. Nickel-Plated Phosphor Bronze Springs. **Female:** Nickel-Plated Beryllium Copper Socket. Plastic Handle. Solderless Assembly. Colors: Red, Black.

SHROUDED RIGHT ANGLE STANDARD BANANA PLUG

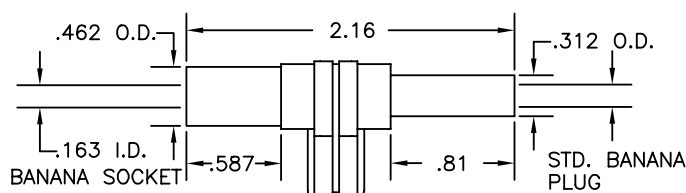


Part No.	Description
9302	Shrouded Right Angle Standard Banana Plug

Fits most **FLUKE** and **B&K PRECISION** Instruments with recessed receptacles for shrouded plugs.

Construction: Nickel-Plated Brass Body. Nickel-Plated Phosphor Bronze Springs. Plastic Handle. Solderless Assembly. Colors: Red, Black.

STACKING SHROUDED RIGHT ANGLE STANDARD BANANA PLUG

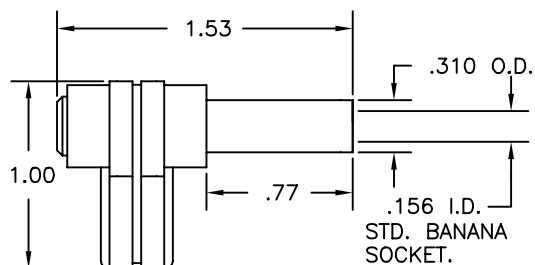


Part No.	Description
9306	Stacking Shrouded Right Angle Standard Banana Plug/Jack

Fits most **FLUKE** and **B&K PRECISION** Instruments with recessed receptacles for shrouded plugs.

Construction: Nickel-Plated Brass Body and Socket. Nickel-Plated Phosphor Bronze Springs. Plastic Handle. Solderless Assembly. Colors: Red, Black.

SHROUDED RIGHT ANGLE STANDARD BANANA JACK

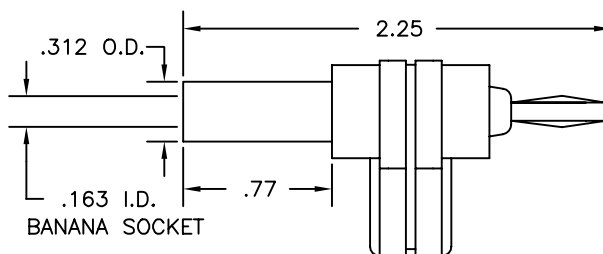


Part No.	Description
9303	Shrouded Right Angle Standard Banana Jack

Fits most **TRIPLETT** Instruments with recessed plugs for shrouded receptacles.

Construction: Nickel-Plated Beryllium Copper Spring Socket. Plastic Handle. Solderless Assembly. Colors: Red, Black.

STACKING RIGHT ANGLE STANDARD BANANA PLUG

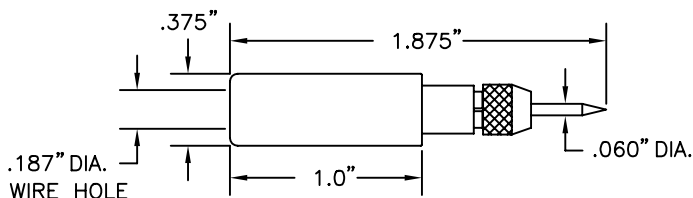


Part No.	Description
9307	Stacking Right Angle Standard Banana Plug

Construction: Nickel-Plated Brass Body and Socket. Nickel-Silver Springs. Plastic Handle. Solderless Assembly. Colors: Red, Black.

TEST LEAD INTERFACE COMPONENTS

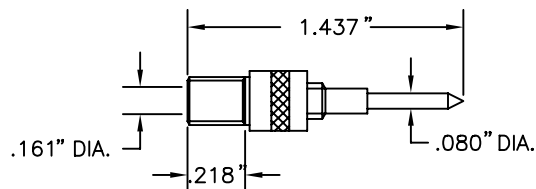
.060" (1.524mm) NEEDLE TIP PROBE



Part No.	Description
9286	Needle Tip Probe
8208	Replacement Needle

Construction: Plastic Handle. 1/4-32 Threaded Assembly. Solder Connection. Nickel Plated Brass Collett. Phono Needle Point. Colors: Red, Black.

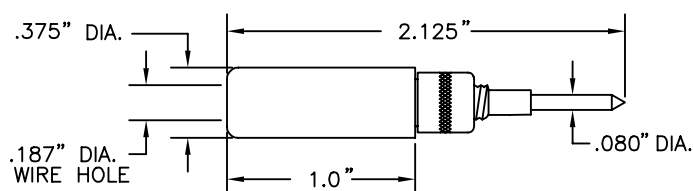
STANDARD .080" (2.03mm) PIN TIP



Part No.	Description
8203	Replacement Tip for P/N 9287 and No. 33 Probes

Construction: Nickel Plated Brass Body and Tip. Solderless Assembly. 1/4-32 Thread. 18AWG Wire Max.

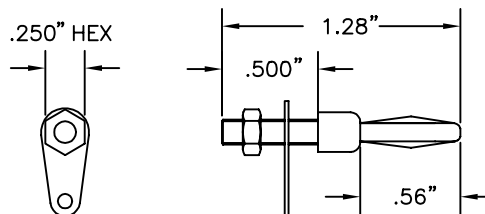
STANDARD .080" (2.03mm) PIN TIP PROBE



Part No.	Description
9287	Pin Tip Probe; 18 AWG Wire Max

Construction: Plastic Handle. 1/4-32 Threaded Assembly. Solderless Connection. Nickel Plated Brass Tip. Colors: Red, Black.

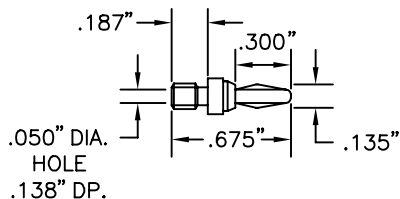
STANDARD BANANA PLUG 6-32 STUD MOUNTING



Part No.	Description
8204	Standard Banana Plug

Construction: Nickel Plated Brass Body and Nut. Tinned Brass Solder Lug. Nickel Plated Beryllium Copper Spring.

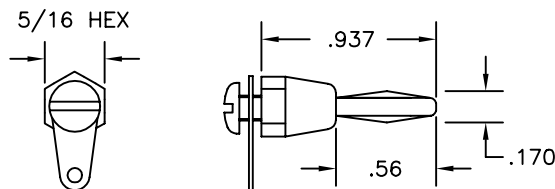
MINI BANANA PLUG



Part No.	Description
8201	Mini Banana Plug

Construction: Nickel-Plated Brass Body. Nickel Plated Beryllium Copper Springs. Solder Assembly. Thread Size 6-32.

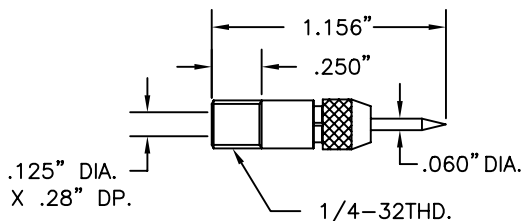
STANDARD BANANA PLUG FEMALE 6-32 THREAD MOUNTED



Part No.	Description
8205	Standard Banana Plug

Construction: Nickel Plated Brass Body and Screw. Tinned Brass Solder Lug. Nickel Plated Beryllium Copper Spring.

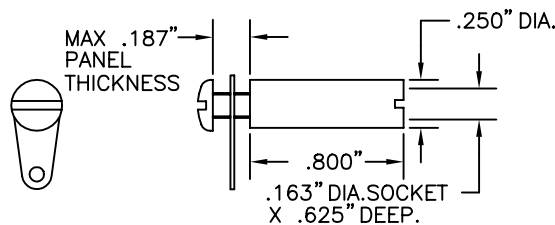
.060" (1.524mm) NEEDLE TIP



Part No.	Description
8202	Phono Needle Tip
8208	Replacement Tip for P/N 9286 and 32 Probes

Construction: Nickel Plated Brass Body. Solder Assembly. 1/4-32 Thread.

STANDARD BANANA JACK FEMALE 6-32 THREAD MOUNTED

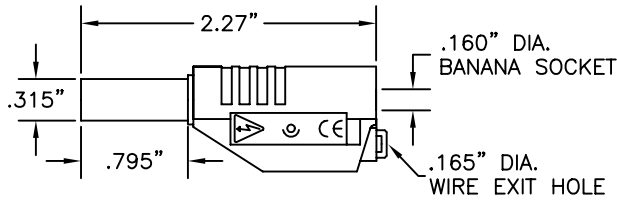


Part No.	Description
8206	Standard Banana Jack

Construction: Nickel Plated Brass Body and Screw. Tinned Brass Solder Lug.

TEST LEAD INTERFACE COMPONENTS

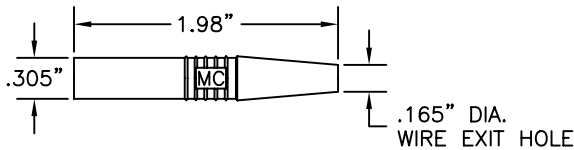
STACKING SHROUDED BANANA PLUG, ACCEPTS SHROUDED BANANA PLUGS



Part No.	Description
9383	Stacking shrouded banana plug, Accepts Shrouded Plugs

Construction: Housing is two piece molded Nylon. Banana Socket & Plug is a one piece machined Brass section with a Beryllium Cu. contact spring, Banana plug tip is insulated. Wire connection is solderless. (IEC 1010 Compliant)
Colors: Red, Black, Yellow, Green, Blue & White.

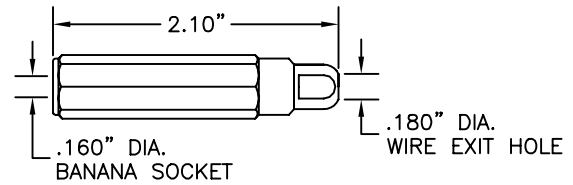
STRAIGHT SHROUDED BANANA PLUG



Part No.	Description
9386	Straight Shrouded Banana Plug

Construction: Housing is one piece molded Nylon. Banana Plug is machined Brass with a contact spring all Nickel plated, Banana plug tip is insulated. Wire connection is soldered. (IEC 1010 Compliant)
Colors: Red & Black only.

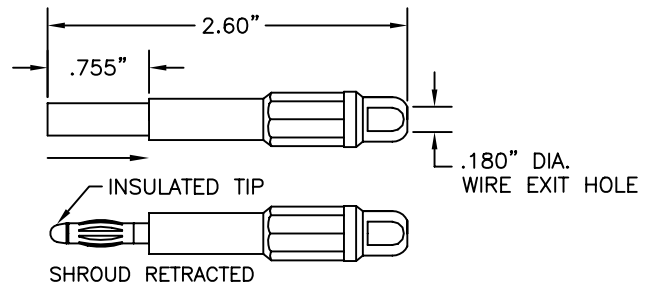
SHROUDED BANANA SOCKET, ACCEPTS SHROUDED BANANA PLUGS



Part No.	Description
9387	Shrouded Banana Socket, Accepts Shrouded Plugs

Construction: Housing is a two piece molded Nylon assembly with a wire collet for strain relief. The Banana Socket is Nickel Plated Brass. Wire connection is soldered.
Colors: Red, Black, Yellow, Green, Blue & White. (IEC 1010 Compliant)

RETRACTABLE SHROUDED BANANA PLUG



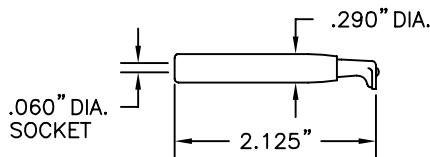
Part No.	Description
9388	Retractable Shrouded Banana Plug

Construction: Housing is a three piece molded Nylon assembly with a wire collet for strain relief. Banana Plug has a Brass frame and Be Cu contact spring, both are Nickel plated. Wire connection is soldered. (IEC 1010 Compliant)
Colors: Red, Black, Yellow, Green, Blue & White.

TEST PROD ADAPTORS & SUBSTITUTION CLIP

BASIC INFORMATION - Colors: Red, Black, Blue, Green, Orange, Yellow, White, Brown, Violet and Gray. Specify color when ordering. **Construction:** Nickel-Silver (or Gold-Plated Nickel-Silver) Conductor and Hook, Nickel-Plated (or Gold-Plated) Brass Socket, Durable Nylon Body and Slide, Stainless Steel Compression Coil Spring.

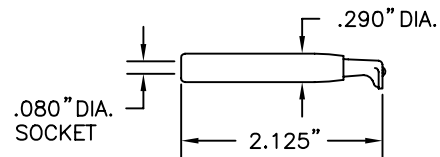
.060" (1.524mm) TEST PROD TIP ADAPTOR



Part No.	Description
55-0	Standard Clip, .060" (1.524mm) Tip Adaptor
55-2	Gold-Plated Clip, .060" (1.524mm) Tip Adaptor

Colors: 10, Specify. See listing in Basic Information.

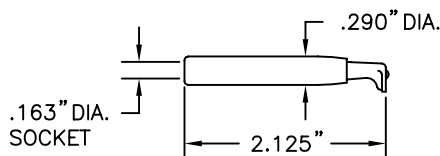
.080" (2.03mm) TEST PROD TIP ADAPTOR



Part No.	Description
56-1	Standard Clip, .080" (2.03mm) Tip Adaptor
56-2	Gold-Plated Clip, .080" (2.03mm) Tip Adaptor

Colors: 10, Specify. See listing in Basic Information.

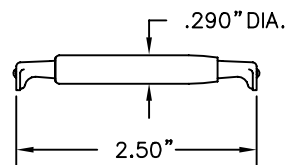
STANDARD BANANA PLUG TEST PROD TIP ADAPTOR



Part No.	Description
59-4	Standard Clip Standard Banana Plug Tip Adaptor
59-2	Gold-Plated Clip, Standard Banana Plug Tip Adaptor

Colors: 10, Specify. See listing in Basic Information.

PART SUBSTITUTION CLIP



Part No.	Description
71-1	Standard Part Substitution Clip
71-2	Gold-Plated Part Substitution Clip

Colors: 10, Specify. See listing in Basic Information.

